

ABAARMANNADA (STATION HOUSE) AYAA FURMI DOONA GUGA 2020

ABAARMANNO LA AWOODI KARO OO 110 AH

KU SOO GUDBI FOOMAMKA ONLAYN LAGA BILAABO MAR 6, 2020 MARKAY TAHAY 9AM.

Abaarmannada waxa loo heli karaa kolba soo sida loo kal horreeyo ee qofka loogu adeego. Wey xaddidan yihiin, dammaanadna lagama qaadi karo, oo waxayna ku xiran yihiin uqalmiitanka codsadaha.

www.communityrootshousing.org

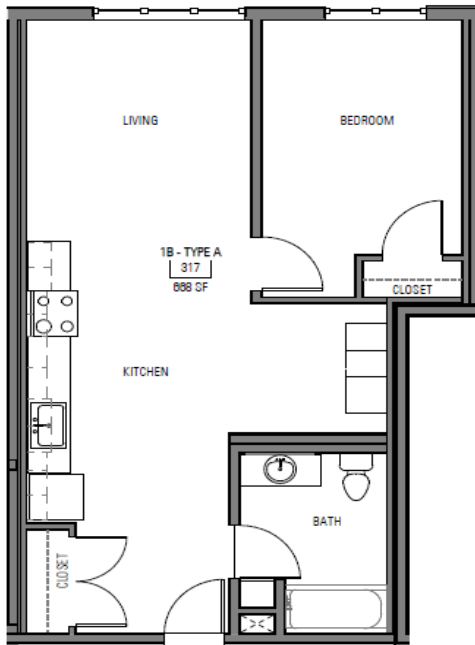


ABAARMANNADA AYAA LOO HELI DOONAA IN LAGU SOO GUURO LAGA BILAABO MAARJ 2020 ILLAA JUUN 2020.

ASTAAMAHA ABAARMANNADA STATION HOUSE

- 110 guryo abaarmanno ah oo la awoodi karo oo loogu talagalay qoysaska iyo shakhsiyaadka
- Aqallo ka kooban hal-, laba-iyo saddex-qolal-jiif
- Bey'da-waafaqsan oo leh sharciyaynta cagaaran (LEED)
- Waxay ku yaalliin xarunta tareenka Capitol Hill Light Rail Station (131 10th Ave E.)
- Bersed saqaf
- Goobo loondhari la wadaago oo ku yaal dabaq kasta
- Meel la dhigto baaskillada
- 1,400 square feet (taako laba jibbaaran) oo ah barxada kulanka bulshada

Dakhli xaddidyo ayaa la tixgalinayaa. Ka fiiri dhinaca kale wixii faahfaahin ah. Hab u yaalka abaarmanka ayaa kaliya ah namuunado.



COMMUNITY ROOTS
HOUSING

Dhisitaanka beelo firfircoon oo arrimaha ka qaybgala.
1620 12th Ave., Ste. 205
Seattle, WA 98122

SOO GUDBI FOOMAMKA LAGA BILAABO MAR 6, 9AM -
WWW.COMMUNITYROOTSHOUSING.ORG

Foomamka lagu sheegayo in la rabo ayaa la heli doonaa illaa inta la helayo codsiyada intooda ugu badan. Macluumaad dheeri ah oo ku saabsan shuruudaha ufiirsiga uqalmidda, caddaymaha loo baahan yahay, iyo nidaamka codsiga ee laga heli karo onlayn.



EQUAL HOUSING
OPPORTUNITY

ABAARMANNADA (STATION HOUSE) AYAA FURMI DOONA GUGA 2020

Eeg jaartiga hoosta si aad u hesho macluumaad dheeraad ah oo ku saabsan xaddiyada dakhli ee qoys kasta, abaarmannada la heli karo. kirada. Inta kirada la bixinayo avaa isbeddeli karta.

Tirada Guryaha	Nooca Abaarmanka	Kiraysi	Tirada Dadka Guriga	Dakhliga Reerka Sannadeed Ugu Yaraanta Ah	Dakhliga Reerka Sannadeed Ugu Badnaanta Ah
Abaarmannada Waxa Loo Qoondeeyay 60% Dakhli Dhexaadka Deegaanka					
37	Istuudiyo (Qol Iskufilan) (385-470 sq ft)	\$ 1,132	1-2 Qof	\$ 27,168	1 Qof \$46,500
36	1 Qol-jiif (538-720 sq ft)	\$ 1,210	1-3 Qof	\$ 36,300	2 qof \$53,150
14	2 Qol-jiif (743-969 sq ft)	\$ 1,445	2-5 Qof	\$ 43,350	3 qof \$59,800
5	3 Qol-jiif (948-1101 sq ft)	\$ 1,646	3-7 Qof	\$ 49,380	4 qof \$66,400
					5 qof \$71,750
					6 qof \$77,050
					7 Qof \$82,350
Abaarmannada Waxa Loo Qoondeeyay 50% Dakhli Dhexaadka Deegaanka					
2	Istuudiyo (Qol Iskufilan) (385-470 sq ft)	\$ 938	1-2 Qof	\$ 28,140	1 Qof \$38,750
5	1 Qol-jiif (538-720 sq ft)	\$ 1,003	1-3 Qof	\$ 30,090	2 qof \$44,300
2	2 Qol-jiif (743-969 sq ft)	\$ 1,195	2-5 Qof	\$ 35,850	3 qof \$49,800
1	3 Qol-jiif (948-1101 sq ft)	\$ 1,359	3-7 Qof	\$ 40,770	4 qof \$55,350
					5 qof \$59,800
					6 qof \$64,200
					7 qof \$68,650
Abaarmannada Waxa Loo Qoondeeyay 30% Dakhli Dhexaadka Deegaanka					
2	Istuudiyo (Qol Iskufilan) (385-470 sq ft)	\$ 551	1-2 Qof	\$ 16,530	1 qof \$23,250
3	1 Qol-jiif (538-720 sq ft)	\$ 587	1-3 Qof	\$ 17,610	2 Qof \$26,550
2	2 Qol-jiif (743-969 sq ft)	\$ 697	2-5 Qof	\$ 20,910	3 Qof \$29,900
1	3 Qol-jiif (948-1101 sq ft)	\$ 783	3-7 Qof	\$ 23,490	4 Qof \$33,200
					5 Qof \$35,850
					6 Qof \$38,500
					7 Qof \$41,200

Guriyaynta Community Roots Housing ayaa u aqbashada codsiyada iyadoo u hoggaansanta Xeerka Guriyaynta Furan ee Magaalada ee Bilaashka ah ee Guryaha Furan ee furan waxayna aqbali doonaan oo keliya codsiyada dhameystiran. Guriyaynta Community Roots Housing ayaa bixisaa 72 saacadood in la dhiibo wixii macluumaad dheeraad ah ee la codsado kaddib wakhtiga codsiga marka horka hore la dhiibo.

Fadlan ogsoonow, mulkiilaha (dhexdeeda magaalada Seattle iyada oo ku xadaysan) ayaa laga mamnuucay inay uga baahdaan shaacinta, weyddiinta, u diidda codsada, ama la qaado tallaabo lid ah looga qaado iyada oo ku saleysan diiwaan kasta oo xirirtaan, diiwaan xukun, ama sooyaal dambi leh, marka laga reebo macluumaadka diiwaanka dembiilaha galmada ee ka soo jeeda dambi lagu xukumay qof qaangaar ah – sida lagu sifeeyay xeerka dowladda hoose ee Seattle (SMC) qodobbada 14.09.025 A3., 14.09.025 A4., iyo 14.09.025 A5, hoos imanayana ka reebka iyo shuruudaha ku iira



SOO GUDBI FOOMAMKA LAGA BILAABO MAR 6, 9AM -
WWW.COMMUNITYROOTSHOUSING.ORG

Foomamka lagu sheegayo in la rabo ayaa la heli doonaa illaa inta la helayo codsiyada intooda ugu badan. Macluumaad dheeri ah oo ku saabsan shuruudaha ufiirsiga uqalmidda, caddaymaha loo baahan yahay, iyo nidaamka codsiga ee laga heli karo onlayn.