

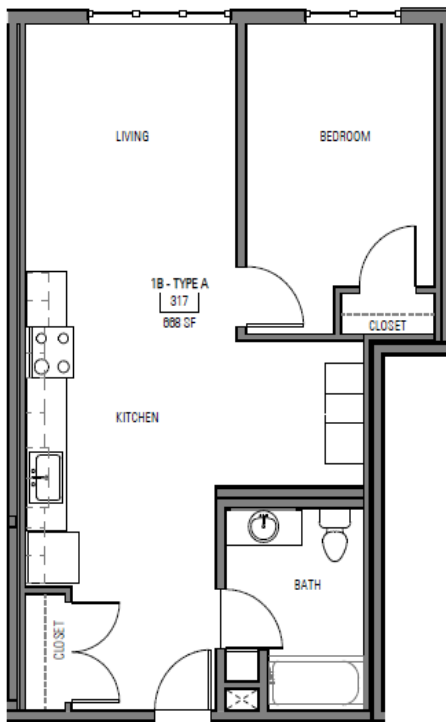
# STATION HOUSE OPEN IN 2020

## 110 AFFORDABLE APARTMENTS

**SUBMIT FORMS ONLINE  
OR CALL 206-204-3800**

Apartments are available on a first come, first serve basis. They are limited, cannot be guaranteed, and depend on applicant eligibility.

[www.communityrootshousing.org](http://www.communityrootshousing.org)



## STATION HOUSE FEATURES

- 110 affordable apartments for families and individuals
- Studios, one-, two- and three-bedroom units
- Environmentally-friendly with green (LEED) certification goal
- Located at the Capitol Hill Light Rail Station (131 10th Ave E.)
- Rooftop deck
- Common laundry facilities on each floor
- Bicycle parking
- 1,400 square feet of community meeting space

*Income limits apply. See reverse for details. Apartment layouts shown are samples only.*



*Building vibrant and engaged communities*  
1620 12th Ave., Ste. 205  
Seattle, WA 98122

**SUBMIT FORMS ONLINE - [WWW.COMMUNITYROOTSHOUSING.ORG](http://WWW.COMMUNITYROOTSHOUSING.ORG)  
OR CALL 206-204-3800**



The form to express interest will be available until the maximum number of applications are received. More information on eligibility screening criteria, required documentation, and the application process available online.

# STATION HOUSE OPEN IN 2020

See chart below for more information on the income limits per household, apartments available, and rent. Rent amounts are subject to change.

Apartment Type	Rent	Household Size	Minimum Annual Household Income	Maximum Annual Household Income
<b>Apartments Reserved for 60% Area Median Income</b>				
Studio (385-470 sq ft)	\$ 1,132	1-2 Persons	\$ 27,168	1 Person \$46,500 2 Persons \$53,150
1 Bedroom (538-720 sq ft)	\$ 1,210	1-3 Persons	\$ 29,040	3 Persons \$59,800 4 Persons \$66,400
2 Bedroom (743-969 sq ft)	\$ 1,445	2-5 Persons	\$ 34,680	5 Persons \$71,750 6 Persons \$77,050
3 Bedroom (948-1101 sq ft)	\$ 1,646	3-7 Persons	\$ 39,504	7 Persons \$82,350



*Community Roots Housing accepts applications in compliance with the City's First-in-Time Open Housing Ordinance and will only accept completed applications. Community Roots Housing gives 72 hours for submission of any follow up information as requested after time of original application.*

*Please be advised, a landlord (within the Seattle city limits) is prohibited from requiring disclosure, asking about, rejecting an applicant, or taking adverse action based on any arrest record, conviction record, or criminal history, except sex offender registry information which is the result of an adult criminal conviction – as described in Seattle Municipal Code (SMC) subsection 14.09.025 A3., 14.09.025 A4., and 14.09.025 A5, and subject to the exclusions and legal requirements in*

*Section 14.09.115. If sex offender registry information is considered, an applicant may provide any supplemental information related to rehabilitation, good conduct, and facts or explanations regarding their registry information.*

**SUBMIT FORMS ONLINE - [WWW.COMMUNITYROOTSHOUSING.ORG](http://WWW.COMMUNITYROOTSHOUSING.ORG)  
OR CALL 206-204-3800**



The form to express interest will be available until the maximum number of applications are received. More information on eligibility screening criteria, required documentation, and the application process available online.